

# LEBANON, INDIANA

## LEBANON STANDARDS

### DIRECTIONS FOR USE

- 1.) The Entire Set Of Full Size Standards Shall Be Attached To The Construction Drawings And Shall Be Considered Part Thereto. Partial Set May Be Used For Small Projects When Approved By The Lebanon Utility Service Board.
- 2.) Details Prepared By Outside Sources Shall Not Be Included In The Construction Drawings When Said Details Cover Work Which Is Covered By Lebanon Standards.
- 3.) Individual Lebanon Standards That Do Not Apply May Be Crossed-Out By Design Engineer Through The Placement Of A Single Large X Over Detail. Minor Reference Notations May Be Placed Adjacent To Individual Standard Titles For Coordination However, The Standards Themselves Shall Not Be Modified In Any Way.
- 4.) Details Prepared By Outside Sources Covering Work Which Is Not Covered By Lebanon Standards Are The Sole Responsibility Of The Design Engineer And Shall Be Placed On Sheets Other Than The Lebanon Standards Sheets.

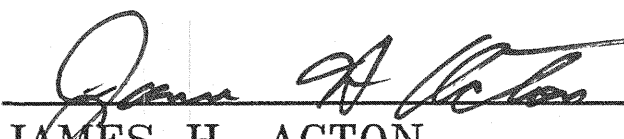
**DATE OF CURRENT ISSUANCE: 5-4-2006**

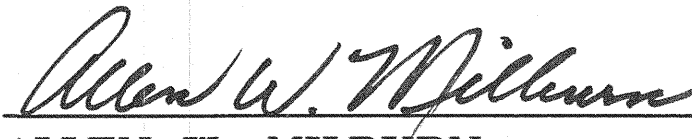
### GENERAL NOTES


- 1.) Contractor Shall Verify The Exact Location Of All Existing Utilities At Least 48 Hours Prior To Any Construction Or Excavation. During Construction, All Utilities Shall Be Adequately Supported To Minimize Damage. The Contractor Shall Be Responsible For Repairing Or Replacing Damaged Utilities To The Satisfaction Of The City Of Lebanon And The Owner Of The Affected Utility.
- 2.) All Construction Drawings Shall Be Submitted To Lebanon Utilities In Electronic Format, Autocad Release 2006\* And PDF. All Coordinate Data Shall Be U. S. Survey Feet. All Benchmarks And Elevations Shall Be From NAD 1983 (Conus) Datum. \*(Autocad Data Interchange, If Created From A Non-Autocad System.)
- 3.) Wherever Proprietary Equipment Is Specified, All Proposals For Substitution Shall Be Submitted In Writing To The Lebanon Utility Service Board And Shall Be Subject To The Findings Of The Lebanon Utility Service Board.
- 4.) Whenever A Non-Parallel Trench Opening Encroaches Within 5' Of An Existing Street Or Whenever Centerline Of Water Main Is Within 3' Of An Existing Street, Flowable Fill Shall Be Used For Trench Backfill.
- 5.) Installation Of Or Provisions For The Installation Of All Underground Utilities (Including Service Laterals) To Be Placed Under Pavement Areas Shall Be Established Prior To The Construction Of The Pavements.
- 6.) Contractor Shall Contact Lebanon Utilities For Electrical Standards, Terms, And Conditions During Project Planning And At Least 1 Month Prior To Construction Or Excavation.
- 7.) Contractor Is Required To Provide To The Lebanon Utilities, A Performance Bond For 125% Of The Construction Cost Of The Work To Be Dedicated To The Lebanon Utilities And A Three-Year Maintenance Bond In The Amount Of 10% Of The Performance Bond. In Addition, The Contractor Shall Make A Written Request For Permission To Start Construction 7 Calendar Days Prior To Intended Start Of Construction. Construction Shall Not Start Until Contractor Has Received Written Permission From Lebanon Utilities.
- 8.) Attention Is Drawn To The Plan Review Fees As Adopted By The Storm Water Management Board And Utility Service Board.

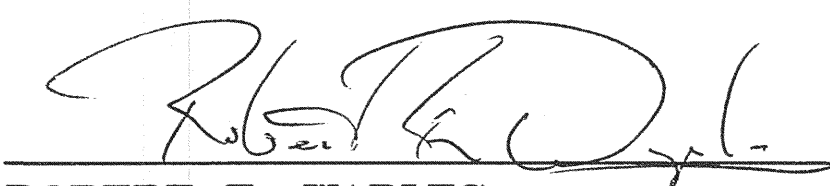
INDEX	
SHEET NO.	DESCRIPTION
1	DIRECTIONS FOR USE, GENERAL NOTES
2	RIGHT-OF-WAY, UTILITY EASEMENT & UTILITY LOCATION & STREET LIGHTING GUIDELINES
3	PLACEMENT OF UTILITIES
4	PAVEMENT, CURB & SIDEWALK DETAILS & NOTES
5	PRIVATE DRIVE DETAILS AND NOTES
6	STREET CUT DETAILS
7	STORM SEWER BEDDING DETAILS AND NOTES
8	STORM SEWER DETAILS AND NOTES
9	WATER MAIN BEDDING DETAILS & NOTES
10	WATER MAIN DETAILS & NOTES
11	WATER MAIN METER SETTING & PITS
12	SANITARY SEWER BEDDING DETAILS AND NOTES
13	SANITARY SEWER DETAILS AND NOTES
14	SANITARY SEWER LIFT STATION STANDARDS & GUIDELINES
15	CASTING STANDARDS
16-18	EROSION CONTROL MEASURES

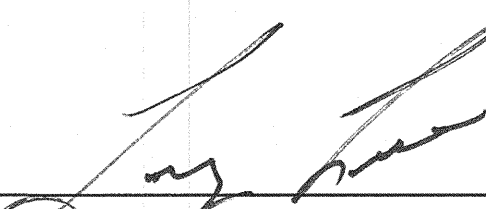
### CITY OF LEBANON

  
 JAMES H. ACTON MAYOR

  
 ALLEN W. MILBURN CHAIRMAN OF UTILITY SERVICE BOARD

  
 MIKE MARTIN UTILITIES MANAGER

  
 ROBERT E. WAPLES WATER/WASTEWATER OPERATIONS MANAGER

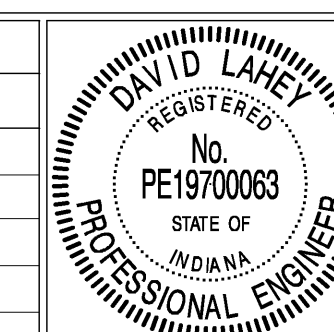
  
 LARRY LEE STREET COMMISSIONER

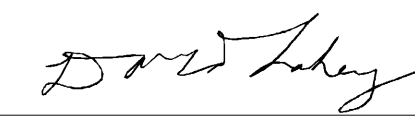
1-800-382-5544  
 HOLEY MOLEY SAYS CALL



AT LEAST TWO FULL  
 WORKING DAYS BEFORE  
 YOU DIG

REVISIONS		
Rev. No.	Description	Date



RECOMMENDED FOR APPROVAL  5-4-2006  
 DESIGN ENGINEER DATE

CITY OF LEBANON  
 DIRECTIONS FOR USE,  
 GENERAL NOTES &  
 REVISION LOG

SHEET  
 1  
 OF  
 18