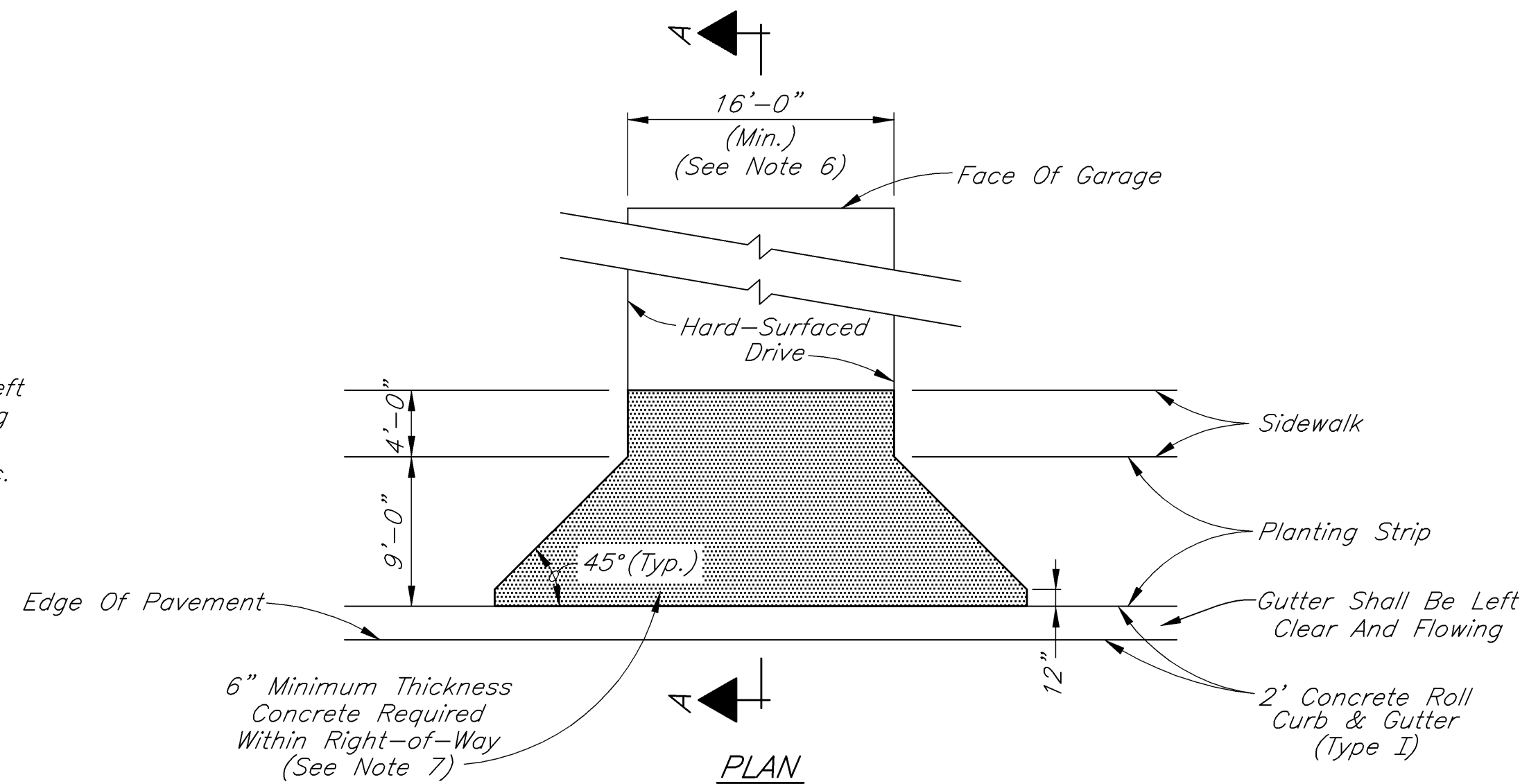
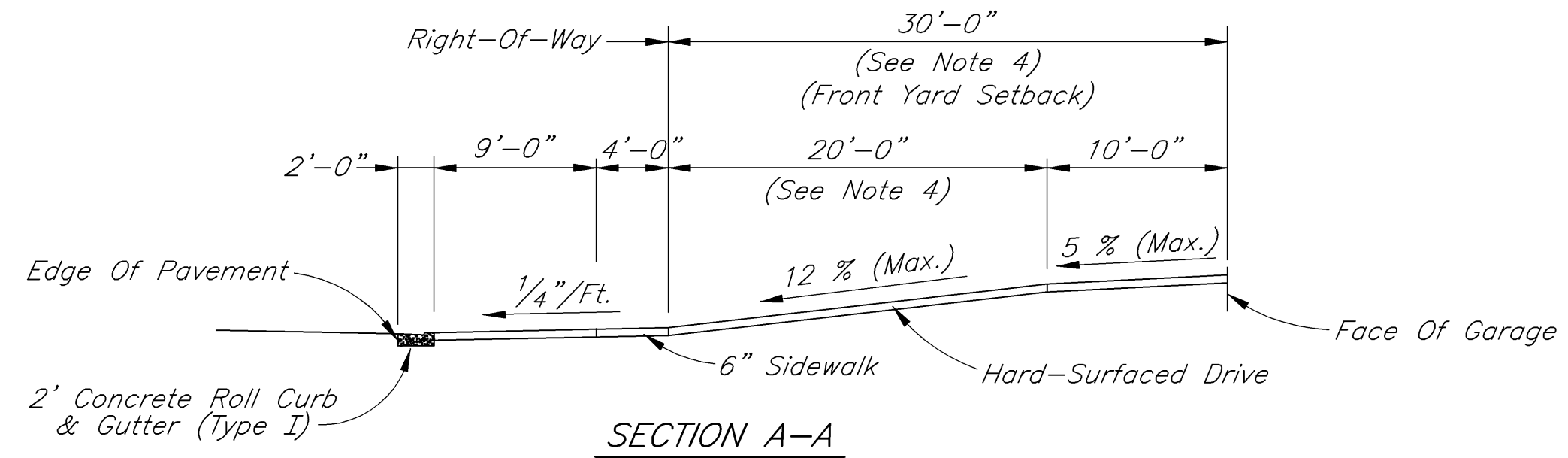


TYPICAL COMMERCIAL PRIVATE DRIVE

Scale: 1/8"=1'-0"

- 1.) The Maximum Algebraic Difference In Grades For Any 10 Foot Interval Shall Not Exceed 8 % For Crest Vertical Curves, Nor 10 % For Sag Vertical Curves.
- 2.) Concrete Drives Require Control Joints At A Maximum Of Every 10 Feet Each Way.
- 3.) Use Actual Setback As Shown On Plat And As Provided By The City Of Lebanon Zoning Ordinance.
- 4.) Street Commissioner May Approve Alternate Paving Materials.



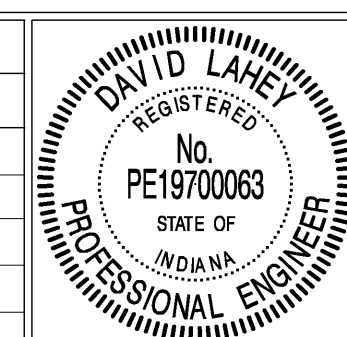
TYPICAL RESIDENTIAL PRIVATE DRIVE

Scale: 1/8"=1'-0"

- 1.) The Maximum Algebraic Difference In Grades For Any 10 Foot Interval Shall Not Exceed 8% For Crest Vertical Curves, Nor 10% For Sag Vertical Curves.
- 2.) The Frontage Of All Lots Shall Drain To Adjacent Streets Except With The Prior Approval Of Lebanon Utilities.
- 3.) Concrete Drives Require Control Joints At A Maximum Of Every 10 Feet Each Way.
- 4.) Use Actual Setback As Shown On Plat And As Provided By The City Of Lebanon Zoning Ordinance.
- 5.) Street Commissioner May Approve Depressed Curb And Alternate Paving Materials.
- 6.) A Written Request For Variance May Be Submitted To The Lebanon Planning Department To Allow For A Reduction To The 16'-0" Minimum Private Drive Width. The Private Drive Shall Be Constructed As Shown Unless A Written Variance Is Issued By The Lebanon Planning Department.
- 7.) Where Residential Drive Construction Is Of Asphaltic Concrete, The Pavement Section Shall Consist Of 110#/Sys. H.A.C. Surface Over 330#/Sys. H.A.C. #8 Binder, Or Match Existing Roadway Pavement Section Thickness, Whichever Is Greater.

C:\2006\09\06\14072006\1\DWG\2006_Standard_Upgrade\Standard.dwg 1 10:09 AM 03-01-06

| REVISIONS | | |
|-----------|-------------|------|
| Rev. No. | Description | Date |
| | | |
| | | |
| | | |
| | | |



| | | |
|--------------------------|----------------------|----------|
| RECOMMENDED FOR APPROVAL | <i>David L. Lane</i> | 5-4-2006 |
| | DESIGN ENGINEER | DATE |
| APPROVED | <i>James W. ...</i> | 6-20-06 |
| | MAYOR | DATE |
| APPROVED | <i>[Signature]</i> | 6-20-06 |
| | STREET COMMISSIONER | DATE |

CITY OF LEBANON
PRIVATE DRIVE DETAILS AND NOTES

SHEET
5
OF
18